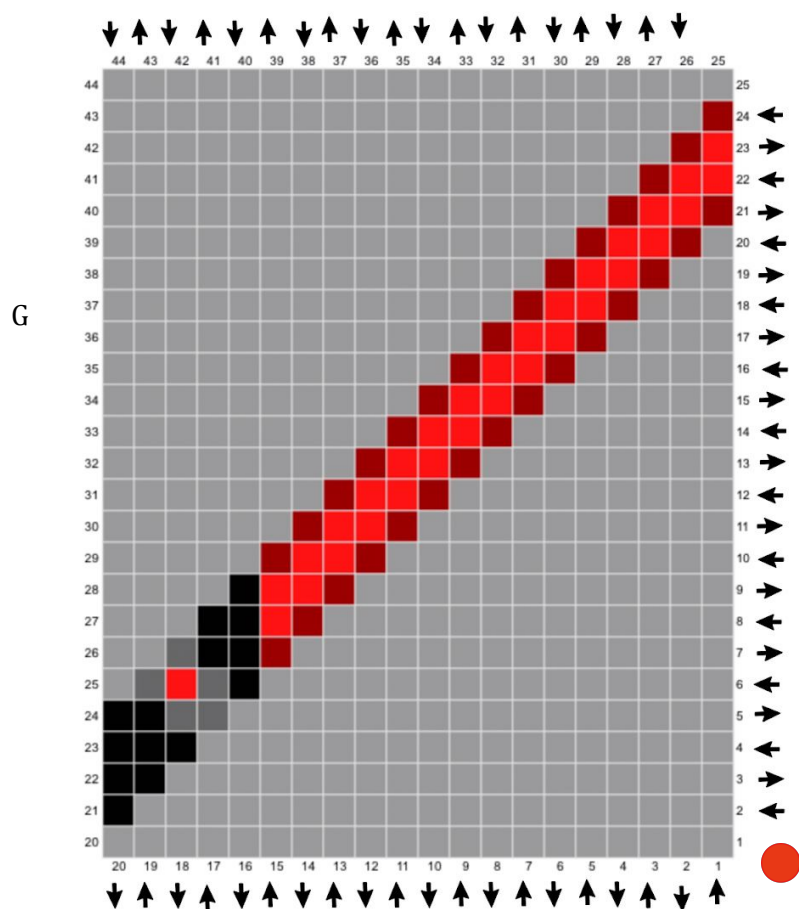


# Star Wars Graphgan 2020: Square Number 11 and 12: Light Sabers



Materials:  
Hook (4 mm)  
Worsted Weight Yarn

Start in Right Hand Corner

Increasing Section: (Rows 1 -25)

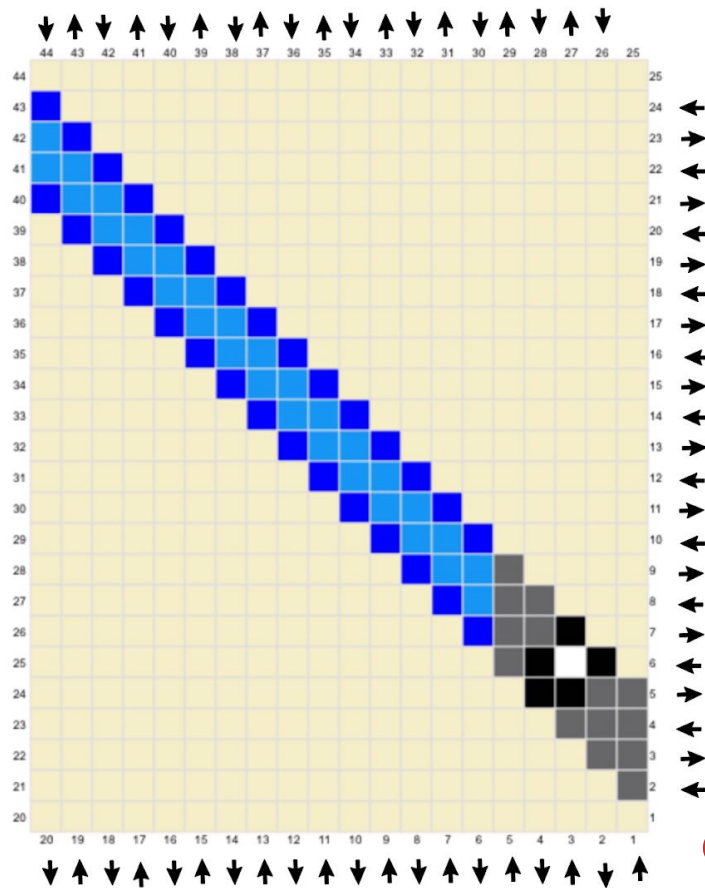
First Square: Ch 4, Work 1 HDC in the 3rd ch sp from the hook and in the next ch sp.

Rest of the row: Join to the next square using a sl st in the ch 2 sp. Ch 2, work 2 HDC in the ch 2 sp.

Decreasing Section: (Rows 26 - 49)

First square, Work 2 sl st across to the ch 2 sp. Ch 2, work 2 HDC in the same sp

Rest of the Row: join to next sq with a sl st in the ch 2 sp. Ch 2, work 2 HDC in the ch 2 sp



Materials:  
 G Hook (4 mm)  
 Worsted Weight Yarn

Start in Right Hand Corner

Increasing Section: (Rows 1 -25)

First Square: Ch 4, Work 1 HDC in the 3rd ch sp from the hook and in the next ch sp.

Rest of the row: Join to the next square using a sl st in the ch 2 sp. Ch 2, work 2 HDC in the ch 2 sp.

Decreasing Section: (Rows 26 - 49)

First square, Work 2 sl st across to the ch 2 sp. Ch 2, work 2 HDC in the same sp

Rest of the Row: join to next sq with a sl st in the ch 2 sp. Ch 2, work 2 HDC in the ch 2 sp